



QRCode▲
<https://www.sbs-group.com/>



SBS GROUP
For Your Dreams.



This is a printed product comprehensively certified as eco-friendly manufactured by a Green Printing Certified Plant using materials that comply with green standards.



The paper is made of raw materials sourced from appropriately managed FSC® certified forests and from recycled resources.



These printed materials use eco-friendly vegetable oil ink.

Dream Logistics

Change Logistics. Shape the Future.

Discontinuous growth through M&A and PMI activities. Change and diversity advance personal growth and strengthen organizations.

The SBS Group actively pursues strategic M&A activities with the aim of achieving sustainable growth and enhancing corporate value. In addition, our unique post-merger integration (PMI) approach of improving profitability without resorting to personnel restructuring has been well received by many of our stakeholders. Our M&A activities span many fields. We seek to maximize corporate value by having our logistics companies that possess a high level of expertise, from traditional major companies to small and medium-sized companies that are rooted in local communities, organically linking each other. The ability to adapt to change and ability to learn from diversity. The changes brought about by M&A activities and the opportunities to encounter different values are the source of individual growth and our competitive advantage.

Making consulting and real logistics closely connected. Sustainable logistics solutions only achievable because of our independence.

There are two types of logistics: "arterial logistics" represented by logistics for production and consumption, and "venous logistics," which handles collection and resource recycling. We are able to provide sustainable logistics services that cover all areas of the recycling-oriented supply chain. In addition, in the design of solutions for the increasingly important fields of logistics consulting and logistics DX, we are able to leverage our entirely independent position to achieve the optimum solutions for customers from among a wide range of choices. More than three decades ago, the SBS Group started from a single truck. Our advanced physical logistics expertise and ability to make reliable proposals work in concert, providing one-stop solutions to customers' logistics issues.



Management Philosophy

- We provide services to achieve client satisfaction, to meet shareholders' expectations, and to be a company caring of its employees.
- Long-term prosperity is rooted in paying the necessary attention to people and in the enthusiasm of our employees.
- Social responsibility is essential to corporate growth. Harmony within the community, efforts to make those around us happy, and contribution to society far and wide, are crucial.

TOP MESSAGE

The SBS Group's DNA: Unrelenting Venture Spirit

Since it was founded in 1987, the SBS Group has reached a number of sales milestones, reaching 10 billion yen in sales by its 10th anniversary, 100 billion yen by its 20th, and 200 billion yen by its 30th year in operation. While the road was not always an easy one, the Group has remained unshaken to preconceived notions, and actively taken on risks and embraced challenges rather than avoiding them for fear of failure. The "unrelenting venture spirit" cultivated over these years has formed the DNA of the SBS Group and continues to be passed down to this day.

Hybrid management ushering in a paradigm shift in logistics

One of the measures supporting the growth of the SBS Group is M&A activities. Companies handling logistics for national brands have joined the Group one after another, and by organically linking with their highly distinctive and outstanding DNA, we have formed a hybrid corporate group. With a wide range of logistics functions spread globally, the ability to propose innovative solutions and as a "mega venture" with an unrivaled sense of speed, we will usher in a paradigm shift in the world of logistics.

For Your Dreams

- Becoming a mega venture delivering dreams around the world -

With preservation of the global environment, the declining birthrate and aging population, digital transformation and other issues, structural changes are advancing at an accelerated pace. Distilling knowledge to achieve high productivity with minimal resources and developing a prosperous future is also the responsibility of those engaging in logistics as a kind of social infrastructure. Based on our slogan, "For Your Dreams," we are not only committed to championing the success of our customers' businesses, but are also pushing forward so that we continue to represent the "infrastructure of hope" that delivers on the dreams of people around the world.

President, SBS Group

**Masahiko
Kamata**



From startup businesses to global SCM. Logistics design optimized for customer growth

Hybrid Logistics Solutions

Warehousing

The SBS Group leverages its network of 700 sites in Japan and a total 3.3 million square meters of warehouse space to meet all manner of logistics needs. Applying our unique roots in manufacturing, we excel in meticulous logistics processing and flexibly accommodate diverse requirements such as temperature control, licensing, and hazardous materials handling.



4PL/3PL

We go beyond conventional third-party logistics (3PL) outsourcing to serve as a comprehensive partner, supporting clients from the planning and formulation of logistics strategy through to execution. Based on the client's operational policies, we deliver optimal solutions to address the full spectrum of logistics-related challenges they face.



Transportation and Delivery

We accommodate diverse transportation requirements with a fleet totaling 5,000 vehicles across the SBS Group. Through joint transport initiatives among industry peers, we achieve efficient logistics with minimal environmental impact.



International Logistics

Leveraging our local subsidiaries centered in major countries and over 300 partnerships, we are a partner providing end-to-end support for clients' global strategies. (AEO Certified/IATA Authorized Agency)



Low-Temperature Logistics

We handle a wide range of logistics management services, from manufacturers' production sites to our valued customers. We also handle three temperature zones and have obtained organic JAS certification, performing direct processing of agricultural products.



Special Transport/ Heavy Transport

We also handle drayage arrangements to ensure smooth transportation. Additionally, we handle special transport for large items to address diverse logistics needs.



Same-day Delivery

Covering Tokyo and the three surrounding prefectures in the Kanto region (Greater Tokyo), we have established a twice-daily morning and afternoon pickup and delivery system enabling us to deliver small-hot B2B shipments on the same or following day. Furthermore, we operate the YC Delivery Service in partnership with the Yomiuri Shimbun newspaper, which has strengths in local delivery. Since our founding in 1987, we have steadily grown as a pioneer in same-day delivery.



DC/TC Logistics

We flexibly and accurately handle diverse merchandise for department stores, supermarkets, convenience stores, and mass retailers, accommodating conditions such as time-specific delivery requirements. We achieve low-cost operations while maintaining high quality and shortening lead times.



EC Logistics

We offer EC Logistics Omakase-kun, a one-stop EC logistics service that handles all processes from website construction to product shipping and receiving operations, all the way through to EC home delivery. Furthermore, we offer SBS Eco-Logi Delivery, a sustainable delivery service, which aims to reduce redelivery rates and contributes to environmental sustainability.



LT×IT

The LT and IT departments of each company work closely together to promote on-site efficiency and system integration. In addition to the phased introduction of logistics solutions into existing operations, we make proposals that best fit the customer's logistics strategy, including comprehensive embedding from the design stage.



Logistics facility development

Development of highly functional logistics facilities, which includes the selection of locations to reduce environmental impacts along with the design of effective placement plans for LT equipment, is something that is possible precisely because of the SBS Group. We provide state-of-the-art logistics facilities which are optimized to meet the needs of our customers. Those facilities are placed on highly competitive land that is purchased through the leveraging our licenses and knowledge.



ESG management

The SBS Group promotes ESG management based on our group's management philosophy and code of conduct. We have sorted out our important themes into four categories: the environment, safety, society, and governance. These are themes that we are working on in a continuous and multilateral manner. In addition to the key logistics issues of the environment and safety, we are deepening our understanding of human capital management and accelerating investment into the next generation of SBS Group personnel.

Group Profile

Group Companies

Strategy for Dream Logistics

SBS Toshiba Logistics

A strategic 4PL company transforming management from logistics

SBS Toshiba Logistics

A Fourth Party Logistics (4PL) company going beyond the boundaries of the Toshiba Group that proposes and realizes logistics strategies in line with management strategies for a wide range of customers. Working in partnership with SBS Group companies, SBS Toshiba Logistics provides integrated services from logistics engineering (planning and design) to the operation of logistics functions at the implementation stages, both in Japan and overseas. By providing total logistics solutions that are not only high quality but competitive, the company provides powerful support for solving customers' management issues.

Main Business Activities

International Logistics (Global Integrated Logistics)

Logistics operations are conducted across 14 local subsidiaries worldwide in the China and Hong Kong, Asia, Europe and North America regions. SBS Toshiba Logistics supports customers' global businesses with services that combine the optimum transportation modes that utilize the different characteristics of each region.



Logistics for Mass Produced Goods

For home appliances, IT and industrial equipment, medical devices and other items, logistics services tailored to each customer's line of business are provided using the specialized know-how the company has accumulated. SBS Toshiba Logistics maintains a full understanding of the quality standards required in each industry and develops proposals to optimize costs and shorten lead times.



Logistics for Equipments and Heavy Products

A strength of SBS Toshiba Logistics lies in its engineering ability to achieve high levels of safety in the transportation of heavy cargo. The integrated management system enables logistics that include planning and arrangements from factory shipping through to local delivery.



Logistics for Electronic Devices

For electronic devices and precision equipment that require delicate handling, methods for quality control and cost reduction honed through experience are used to propose optimum solutions for customers, covering everything from improved packaging, loading efficiency and delivery networks to security measures.



Company Name	SBS Toshiba Logistics Corporation	Paid-in Capital	2,128 million yen
Representative	Yasushi Kanazawa, President and Representative Director	Head Office Location	Sumitomo Fudosan Shinjuku Grand Tower 25F 8-17-1, Nishi-Shinjuku, Shinjukuku, Tokyo,160-6125, Japan
Established	October 1, 1974		



Improvement for Dream Logistics

SBS NEXTHIRD

A pioneer in precision machinery logistics that has mastered improvement capabilities

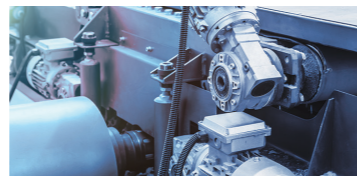
SBS NEXTHIRD

Managing the supply chains of precision equipment manufacturers played a key part in the establishment of SBS NEXTHIRD. With the impressive quality and "KAIZEN" capabilities for which national brands are renowned in our DNA, we support the success of our customers through domestic and overseas third party logistics (3PL). With our outstanding logistics technologies we continue to propose the best methods for a wide range of customers' logistics needs based on a backbone of "recycling-oriented logistics" that integrates procurement, production, sales and venous logistics.

Main Business Activities

Logistics for Precision Equipment (Machine Delivery Services)

From electronic components to large copiers and medical devices weighing hundreds of kilograms, our expertise lies in the transportation of precision equipment that is sensitive to external factors such as vibrations, impacts, temperature, humidity and static electricity.



Logistics Technology

SBS NEXTHIRD is involved in research into cutting edge technologies in the logistics field and supporting their adoption by customers. Process design and flow lines are verified using material handling and information systems. This approach achieves optimum logistics operations.



Supply Chain Logistics

Covers procurement, production and sales up to the last mile, as well as the collection and processing of products and goods. Using its global network as a base, SBS NEXTHIRD provides shipping rates that take advantage of economies of scale, and trade services offering multimodal logistics services covering both Japan and overseas.



Company Name	SBS NEXTHIRD Co., Ltd.	Paid-in Capital	448 million yen
Representative	Katsuhisa Wakamatsu, President and Representative Director	Head Office Location	Sumitomo Fudosan Shinjuku Grand Tower 25F 8-17-1, Nishi-Shinjuku, Shinjuku, Tokyo, 160-6125, Japan
Established	February 1, 1964		



Flexibility for Dream Logistics

SBS Logicom

An All-Rounder in Total Logistics

SBS Logicom

As a partner company to its customers, SBS Logicom provides total logistics services covering everything from logistics consulting and strategy to planning and operations. With various waves of change sweeping through the logistics industry, SBS Logicom continues to make strides forward as a logistics company meeting the needs of a wide range of customers across various industries and supporting social infrastructure through a focus on warehouse management, cargo handling and distribution processing services, along with logistics centers, truck and rail transportation, special transportation, customs clearance and international transportation, government, corporate and school relocations, and on-site logistics.

Main Business Activities

3PL Solutions That Excel in the Field

SBS Logicom covers a wide range of industries from manufacturer logistics to retail distribution including online sales. A field-savvy consulting team provides support from developing plans for requirement definitions in the design of facilities, equipment, systems and operation, through to launch and stable operation.



Versatile Transportation Capabilities

A transportation system that covers upstream and downstream supply chain operations. We operate a rich lineup of vehicles, from vehicles for general consumer goods to special vehicles capable of transporting heavy goods, as well as container transport by sea and rail. From factory to end user delivery, we can meet all customer needs.



Optimum Logistics Center Operation

SBS Logicom has an extensive track record handling high-mix, small-lot goods from home improvement centers, department stores, drug stores, interior retailers, supermarkets, as well as the music, video and fashion industries. SBS Logicom also provides one-stop services for e-commerce logistics that add extras including fulfillment and home delivery.



Company Name	SBS Logicom Co., Ltd.	Paid-in Capital	101 million yen
Representative	Masahiko Kamata, Representative Director	Head Office Location	Sumitomo Fudosan Shinjuku Grand Tower 25F 8-17-1, Nishi-Shinjuku, Shinjuku, Tokyo, 160-6125, Japan
Established	January 26, 1940		



Specialty for Dream Logistics

SBS Flec

A company specializing in food logistics that pushes the limits of quality

SBS Flec

Founded in 1956 as Yukijirushi Logistics Co., Ltd. Today, we are one of the few 3PL companies in Japan that can handle products in all three temperature ranges: dry (room temperature), chilled (refrigerated), and frozen. We provide comprehensive support for food manufacturers' products, from production to stocking in stores. As a leading cold chain logistics company, we deliver safe and secure food products.

Main Business Activities

Food 3PL

SBS Flec fulfills the need to reduce logistics costs by carrying out all logistics management operations from the production sites of food manufacturers to their customers. SBS Flec can also be safely entrusted in on-site logistics services at customers' manufacturing plants.



Food Logistics Services at the Three Temperature Zone

SBS Flec specializes in food logistics and handles cargo at all three of the temperature zones, dry, chilled and frozen. The company also strives to enhance the tangible and intangible aspects of its services, including improvements to delivery trucks, logistics facility renovation and new construction, introduction of information systems, and the acquisition of various certifications.



Logistics Centers Specializing in Food

SBS Flec has developed logistics center, transport and delivery networks that cover the entire country. A wide range of services including information system functions and call center operations are provided, with a focus on in-center operations, transportation and delivery.



Company Name	SBS Flec Co., Ltd.	Head Office Location	Sumitomo Fudosan Shinjuku Grand Tower 25F 8-17-1, Nishi-Shinjuku, Shinjukuku, Tokyo, 160-6125, Japan	
Representative	Mitsugu Kakushi, President and Representative Director			
Paid-in Capital	218.95 million yen			

Challenge for Dream Logistics

Bridgestone Logistics

A company that unites tire logistics through initiative and a spirit of taking on challenges

Bridgestone Logistics

Bridgestone Logistics Co., Ltd. became a member of the SBS Group on October 1, 2025. Leveraging its front-line expertise, technology, and nationwide network cultivated primarily in tire and raw material logistics, the company will strive to unite tire logistics while creating new value and solving common logistics challenges through proactive initiatives and the collective strength of all employees.

Main Business Activities

Tire Logistics Service

At the same time, we are implementing work style reforms while improving the quality of logistics through our labor saving and low-cost storage services as well as our in-house development of automated facilities and a collaborative network. We provide comprehensive tire logistics services encompassing transportation, storage, and cargo handling.



Joint Logistics Services

We provide joint logistics (storage and transportation) services that go beyond the conventional bounds of a manufacturer by utilizing the knowledge and experience of the SBS Group as well as 120,000 logistics sites and delivery destinations nationwide. We are also committed to addressing the social challenge of reducing CO₂ emissions.



Container Logistics Services

We can secure vessel space at competitive transportation costs by leveraging economies of scale. We handle international door-to-door integrated transportation leveraging our network as well as the transport of oversized and heavy cargo that cannot fit in standard containers.



Company Name	Bridgestone Logistics Co., Ltd.	Paid-in Capital	400 million yen	Head Office Location	
Representative	Yoshihiro Miyoshi, President and Representative Director	Established	July 1, 1995		
Head Office Location	Sumitomo Fudosan Shinjuku Grand Tower 25F 8-17-1, Nishi-Shinjuku, Shinjukuku, Tokyo, 160-6125, Japan				

Acceleration for Dream Logistics

SBS Sokuhai Support

The SBS Group's last one mile company

Creation for Dream Logistics

SBS Zentsu

An innovator in the food supply chain responding to needs with "creative logistics"

SBS Sokuhai Support

SBS Sokuhai Support Co., Ltd. is the founding company of the SBS Group. The company's core business is B2B small-lot delivery services, featuring same-day delivery across Greater Tokyo. In recent years, the company has expanded into B2C e-commerce shipments and now serves a broad customer base as a last one mile delivery provider. We also operate environmental services as another pillar of our business. We collect and transport industrial waste and, at our own intermediate treatment plant, promote the 3Rs (Reduce, Reuse, Recycle), providing waste disposal services that give our clients peace of mind and satisfaction. Centered on these businesses, we will strive to meet our clients' diverse needs and advance as a logistics company that prioritizes safety, security, and quality above all else.

Main Business Activities

B2B Business

Same-day and next-day delivery as our core services, along with diverse shipping options including both spot and chartered deliveries. This can be used as a foundation to dramatically improve the agility of clients' businesses.



B2C Business

We engage in services that meet diverse needs, such as EC Home Delivery Service, YC Delivery Service and SBS Eco-Logi Delivery to partner with and accelerate clients' businesses.



Environmental Business

After collecting and transporting industrial waste, we perform intermediate processing at our own facilities and ship it to the final treatment plant. We also provide full turnkey services encompassing the purchase of office equipment, recycling, and the complete erasure of confidential information.



Company Name	SBS Sokuhai Support Co., Ltd.	Head Office Location	1-5-29 Shinsuna, Koto-ku, Tokyo, 136-0075, Japan	
Representative	Masahiko Kamata, Representative Director			
Paid-in Capital	100 million yen			

SBS Zentsu

SBS Zentsu provides total support for the food supply chain by building logistics systems that consolidate pre-cooled and temperature-controlled transportation, joint delivery and food in four temperature zones. In response to increasingly sophisticated and complex logistics needs, SBS Zentsu uses the "creativity" it has cultivated providing operations and services for many years as a powerful tool, overcoming difficulties and issues one after another while continually creates new solutions.

Main Business Activities

Co-op Home Delivery Business

From the Tohoku region in the north to the Kyushu region in the south, approximately 1,300 trucks and more than 1,400 employees are engaged in the individual home delivery business for co-ops across Japan, which requires advanced customer service skills that go beyond simple deliveries.



Pre-Cooled and Temperature-Controlled Transportation and Freezing Refrigeration Centers

We own and operate a large number of refrigerated vehicles that can handle a variety of temperature ranges, providing high quality coverage across the supply chain. At our freezing and refrigeration centers, we are expanding our business across the entire food cold chain, utilizing our strengths in distribution processing. This includes fruits and vegetables, which are notoriously difficult to handle.



E-Commerce Logistics Business

Utilizing our detailed delivery network and the quality of professional sales drivers we have fostered in the home delivery business, we are actively expanding our business as a last-mile leader in e-commerce logistics, a field that continues to grow rapidly.



Company Name	SBS Zentsu Co., Ltd.	Head Office Location	Sumitomo Fudosan Shinjuku Grand Tower 25F 8-17-1, Nishi-Shinjuku, Shinjuku, Tokyo, 160-6125, Japan	
Representative	Nobuyuki Ikeda, Representative Director			
Paid-in Capital	83.45 million yen			

Safety and Quality for Dream Logistics

SBS NSK Logistics

Experts in the logistics of precision machinery parts in the pursuit of safety, accuracy and efficiency

SBS NSK Logistics

Leveraging logistics know-how accumulated at the NSK Group, a leading manufacturer of bearings and precision machinery parts, we provide logistics plans that are in step with the new times.

Main Business Activities

■ Transportation Business

We build logistics networks tailored to customer needs by leveraging NSK's product and material transportation network. We will shorten distribution routes by utilizing our own warehouses and enhance just-in-time delivery.

■ Warehousing Business

Managing the entire logistics flow, from storage to outbound shipping, vehicle dispatch, and delivery, through a computer network. We respond to even unexpected orders and other requests with high efficiency and speed. A rational system enables loss-free operations and keeps logistics costs down.



■ Subcontracting Business

We subcontract distribution processing and, cleaning of returnable containers and pallets. We are undertaking projects that reduce environmental impact through recovery and reuse, and provide appropriate solutions from an SDGs perspective to address increasingly extreme weather disasters.

■ Cargo Handling and Packing Business

We have obtained IATF 16949 (quality) and ISO14001 (environmental) certifications. As a logistics company capable of meeting the needs of global society, we have equipped ourselves with the latest hardware and software, and we approach our work with a robust system worthy of our IATF and ISO certifications.



Company Name	SBS NSK LOGISTICS Co., Ltd.	Head Office Location	Sumitomo Fudosan Shinjuku Grand Tower 25F 8-17-1, Nishi-Shinjuku, Shinjukuku, Tokyo,160-6125, Japan	
Representative	Yoshitaka Yoneyama, President and Representative Director			
Paid-in Capital	90 million yen			

Solution for Dream Logistics

SBS Furukawa Logistics

A logistics solutions partner that solves logistics challenges facing customers

SBS Furukawa Logistics

We have accumulated years of knowledge and skills in the transportation and delivery, storage, and distribution processing of electric cables, functional plastic products, and nonferrous metal products. Building on this expertise, we will integrate the SBS Group's state-of-the-art LT and IT technologies, logistics networks, and know-how to solve various logistics challenges across our customers' supply chains.

Main Business Activities

■ Transportation and Storage Business

We have a long history of handling relay transportation across a wide range of industries, including manufacturing, construction, energy, and infrastructure. Even for cargo with demanding handling requirements such as automotive components, non-ferrous metals, and air conditioning equipment, we respond through a relay network that prioritizes safety above all else. We link land, sea, and warehouse operations to achieve efficient and eco-friendly transportation and distribution.



■ Logistics Processing Operations

Our logistics centers feature in-house processing capabilities, providing integrated solutions from packaging material manufacturing to final packaging. We excel not only in managing optimal inventory levels but also in handling heavy cargo weighing several tons. From precision components to large machinery and industrial materials, we propose the most suitable and optimal distribution processing and storage plans tailored to each product's attributes.



■ Logistics Consulting Business

We design procurement logistics to enhance the competitiveness of clients' products. We established a system capable of supporting the kanban method linked to the manufacturing floor, and also developed a "control board" method to optimize the loading efficiency of procurement vehicles. We support the improvement of production efficiency by properly arranging everything from material procurement to line supply.



Company Name	SBS Furukawa Logistics Corp.	Head Office Location	Sumitomo Fudosan Shinjuku Grand Tower 25F 8-17-1, Nishi-Shinjuku, Shinjukuku, Tokyo,160-6125, Japan	
Representative	Shingo Morita, President and Representative Director			
Paid-in Capital	292 million yen			

Expansion for Dream Logistics

SBS Global Network

Extensive overseas logistics network



SBS Freight Service

From transportation and delivery to logistics center operation



SBS Staff

Placing the right staff in speedy fashion



Based on its extensive overseas distribution network that extends from Japan to Asia and the world, SBS Global Network supports supply chains in Japan and abroad.

The company conducts analyses of the current status of international logistics being implemented by customers (consulting).

It then proposes and implements optimum import and export operations based on cargo characteristics and supply chain strategies.



International Logistics



Company Name	SBS Global Network Co., Ltd.
Representative	Yasunori Kudo, President and Representative Director
Established	March 1987
Paid-in Capital	50 million yen
Head Office Location	Sumitomo Fudosan Shinjuku Grand Tower 25F 8-17-1, Nishi-Shinjuku, Shinjuku-ku, Tokyo, 160-6125, Japan
Lines of Business	Import and export services, domestic cargo pickup and delivery services, transportation services with overseas parties, other additional services

Transportation and delivery network covering the Pacific side of eastern Japan to the Kansai region.

SBS Freight Service offers an extensive range of transportation services from three-temperature-zone transportation, special transportation such as shipping for filming locations, marine container drayage transportation, warehousing, storage and distribution processing.

The company is also focusing on distribution center operation in response to expanding e-commerce needs.



Company Name	SBS Freight Service Co., Ltd.
Representative	Hirotsugu Nakatsuka, Representative Director
Established	June 1944
Paid-in Capital	100 million yen
Head Office Location	5-32-50, Sugita, Isogo-ku, Yokohama-shi, Kanagawa Prefecture, 235-0033, Japan
Lines of Business	General transportation, special transportation, marine container-based transportation, logistics center operation, warehousing and storage

SBS Staff specializes in the logistics business and operates a worker dispatch business tailored to customer needs. With its unique matching system, the company is able to respond to sudden job openings. Fee-based job placement services are also available.



Human Resources



Company Name	SBS Staff Co., Ltd.
Representative	Osanori Watanabe, Representative Director
Established	June 1997
Paid-in Capital	70 million yen
Head Office Location	Sumitomo Fudosan Shinjuku Grand Tower 25F 8-17-1, Nishi-Shinjuku, Shinjuku-ku, Tokyo, 160-6125, Japan
Lines of Business	Worker dispatch business, fee-based job placement business, business process outsourcing (BPO) business, business outsourcing, comprehensive human resource service business, operation of human resources portal site

SBS Finance

The optimum finance for logistics



Marketing Partner

E-commerce business professionals



SBS Driving School

Developing safe drivers



SBS Finance provides a wide range of services from leasing and sales to insurance. As a finance company excelling in the area of logistics, SBS Finance provides a range of functions including the joint purchasing of consumables for logistics businesses.



Finance



Company Name	SBS Finance Co., Ltd.
Representative	Hiroshi Aida, Representative Director
Established	April 1991
Paid-in Capital	150 million yen
Head Office Location	Sumitomo Fudosan Shinjuku Grand Tower 25F 8-17-1, Nishi-Shinjuku, Shinjuku-ku, Tokyo, 160-6125, Japan
Lines of Business	Vehicle and office equipment leasing business, fuel and tire sales business, life and non-life insurance agency business

Providing one-stop construction and operation of e-commerce sites. We support e-commerce businesses from the four aspects of marketing, analysis, creativity, and fulfillment, and carry out the planning, development, and operation of e-commerce sites for the pet food brands Pochi, tama, and J&C.



Company Name	Marketing Partner, Inc.
Representative	Masato Taiji, President and Representative Director
Established	March 1998
Paid-in Capital	10 million yen
Head Office Location	Sumitomo Fudosan Shinjuku Grand Tower 25F 8-17-1, Nishi-Shinjuku, Shinjuku-ku, Tokyo, 160-6125, Japan
Lines of Business	Planning, design and operation for direct marketing with a focus on e-commerce support, web promotion, creative development, data mining, fulfillment and planning, development, import, wholesale and online shopping business of premium pet food

We operate driving schools with the aim of developing safe drivers in the SBS Group and local community. Students can obtain licenses for regular cars, mid-sized vehicles and motorcycles.



Safe Driving Training



Company Name	SBS Driving School Co., Ltd.
Representative	Tadaaki Ooto, President and Representative Director
Established	March 1963
Paid-in Capital	22 million yen
Head Office Location	341 Naganumacho, Inage-ku, Chiba-shi, Chiba Prefecture, 263-0005, Japan
Lines of Business	Driving training business (SBS Driving School Inage and Anesaki Driving School)

Development for Dream Logistics

SBS Asset Management

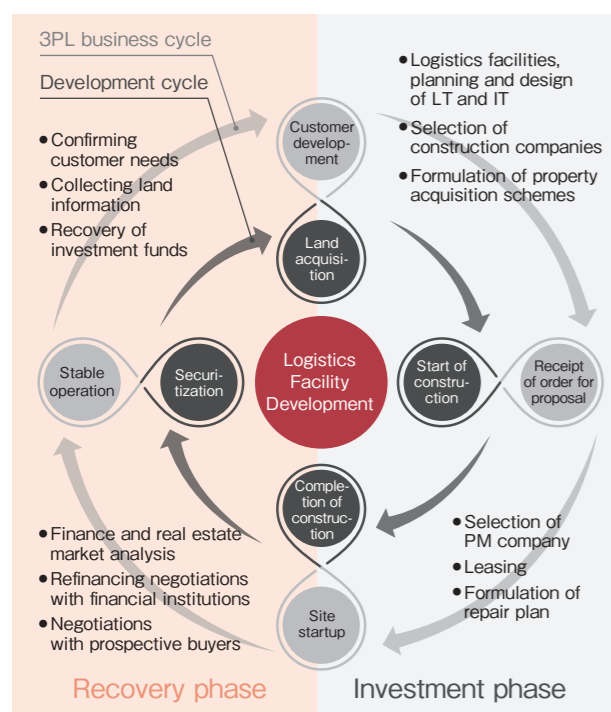
An asset manager expanding high-functionality logistics nationwide

SBS Asset Management

SBS Asset Management is the asset management company responsible for developing the logistics facilities of the SBS Group. Using expert knowledge and know-how regarding finance, real estate, and logistics, the company independently develops specialized logistics facilities optimized for 3PL. With a strength in highly functional design informed by an intimate knowledge of logistics in the field, SBS Asset Management achieves superior logistics quality through facility development that encompasses business continuity planning (BCP) and sustainability. Furthermore, the company participates from initial site selection and land acquisition tailored to the customer's logistics strategy, delivering end-to-end asset management specialized in logistics facilities, from leasing through to asset securitization. In addition to seven completed projects, SBS Asset Management plans to complete three buildings in fiscal 2026 and has an ample pipeline of developments across Japan for fiscal 2027 and beyond.

〈 Logistics Facility Development 〉

The SBS Group's logistics facility development activities are essential to providing 3PL services that satisfy customers. High-level functionality and design that can only be achieved with an intimate knowledge of customer needs and logistics in the field, and the development of logistics facilities by a group of asset management professionals with advanced financial knowledge and familiarity with the real estate market, have been met with strong approval from shippers and investors alike.



Tomisato Logistics Center
(Multi-tenant logistics facility)

Site Area	51,959㎡	Address	85-1 Kita-Otamebukuro, Aza Nanae, Tomisato-shi Chiba
Total Floor Area	118,352㎡		
Completion of Construction	August 31, 2026		

The Tomisato Logistics Center is a large multi-tenant logistics facility connecting the Tokyo metropolitan area with international logistics networks thanks to excellent access to Narita Airport, Tokyo Port, and Chiba Port. With a large-scale design of approximately 25,000㎡ per floor, flexible partitioning is possible to match business scale and operational needs, from use of the entire building down to individual floor units. We accurately address increasingly diverse and advanced logistics needs, delivering efficient and stable operations. Furthermore, the adoption of solar power generation equipment reduces environmental impact, while enhanced amenities like a cafeteria make for a comfortable and sustainable workplace environment. We provide long-term support for the customer's logistics strategy by serving as an optimal hub combining functionality, convenience, and environmental sustainability.

〔 Technologies and Initiatives Supporting High-Functionality Logistics 〕

■ 〔 Logistics DX powered by LT (Logistics Technology) and IT (Information Technology) 〕

To achieve warehouse operations that go beyond traditional labor-intensive in-warehouse operations, we are introducing advanced logistics robots such as goods-to-person (GTP) solutions and automated packaging machines as well as material handling equipment like sorters and digital picking systems (DPS) across all Group sites. Furthermore, by connecting warehouse management systems utilizing AI and big data with these facilities, we are advancing automation and labor reduction in logistics operations from both tangible and intangible perspectives. Additionally, we have established a dedicated team to drive logistics DX, enabling us to flexibly address the diverse logistics transformation needs expressed by our customers.



■ Solar Power Generation

Energy costs are reduced by consuming the generated renewable energy on-site at logistics centers. Renewable energy that cannot be used internally is sold, thereby contributing to a decarbonization solution.



〈 BCP x Sustainability 〉

●BCP: Based on hazard maps, flood countermeasures tailored to the planned sites, such as raising the level of the first floor of the warehouse, are being implemented. It is possible to prepare for planned power outages and other contingencies by installing private power generation equipment as well as setting up equipment and disaster-prevention storage facilities, thus securing and stockpiling a certain level of emergency supplies.

●Sustainability: LED lighting is used in warehouses which is combined with motion sensors in restrooms and stairwells. Total heat exchangers are installed in offices, document rooms, and similar spaces to reduce air conditioning load. Solar panels (for in-house consumption and surplus electricity sales) are installed on rooftops.

〈 Rent Business 〉



Minami Shinjuku SK Building
(Office Building)

Site Area	1,143㎡
Total Floor Area	7,531㎡
Completion	July 1997

We own and manage around 30 properties including roadside stores, condominiums and city-center offices, primarily in the Tokyo metropolitan area.



Company Name	SBS Asset Management Co., Ltd.	Paid-in Capital	160 million yen
Representative	Yasuhiko Ueda, Representative Director	Head Office Location	Sumitomo Fudosan Shinjuku Grand Tower 25F 8-17-1, Nishi-Shinjuku, Shinjukuku, Tokyo,160-6125, Japan
Established	September 3, 2004		



Sustainability

The SBS Group has always been committed to achieving sustainable growth and resolving social issues. However, in light of the significant changes in our business environment and the growing importance of achieving both a sustainable society through the resolution of social issues and the sustainable enhancement of corporate value, the Group has established the following sustainability-related structures.

SBS Group Sustainability Structure

SBS Group Sustainability Policy

Basic Philosophy

Based on the spirit of the SBS Group's management philosophy of respecting people and being socially responsible, all our employees are aware of their role as members of the international community, and actively promote sustainable initiatives in accordance with the following policy in order to contribute to the stability of people's lives and the realization of a sustainable society through logistics, a part of the social infrastructure.

The SBS Group connects with people and takes their wishes seriously.

- We protect and respect human rights and diverse values in all our corporate activities.
- We provide a corporate culture in which diverse human resources can work together with mutual respect, and an environment in which they can work safe and healthily.
- By conducting appropriate training in a timely manner, we develop human resources who can contribute to society by creating value.

The SBS Group connects with society and meets social expectations.

- We comply with laws, regulations, and international rules, conduct our business in a fair and honest manner, and take thorough anti-corruption measures.
- We respect social rules, build mutual trust with local communities, and contribute to society through our business activities.
- We strive to faithfully meet the requests and expectations of all stakeholders through appropriate information disclosure and responsible dialogue.

The SBS Group connects with the Earth and cares about its future.

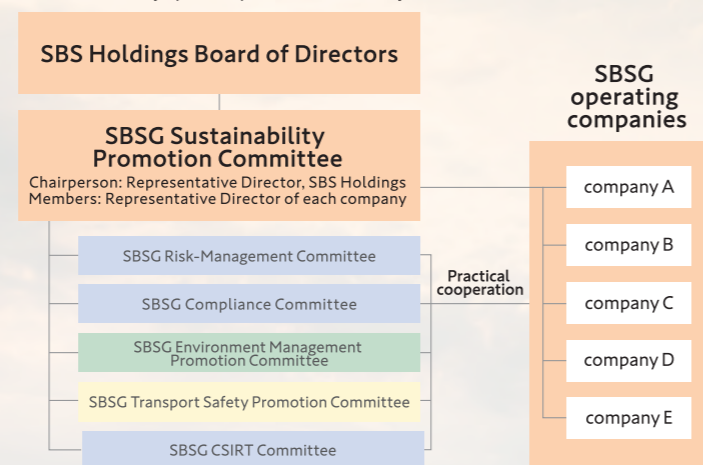
- We place importance on thorough environmental management, and do our utmost to protect the global environment by reducing the environmental impact of all our business activities.
- We are constantly aware of the risks of climate change and promote efforts to reduce greenhouse gas emissions in order to achieve a decarbonized society.

Basic Policy

SBS Group Sustainability Promotion Committee

The SBS Group established the Sustainability Promotion Committee in January 2023 in order to develop and strengthen the management system in accordance with our Sustainability Policy, and to implement sustainability management Groupwide to achieve both a sustainable society and sustainable enhancement of our corporate value. The Committee is positioned as an advisory body to the Board of Directors and is responsible for formulating sustainability strategies and activity policies for the SBS Group as a whole, and for monitoring KPI indicators and linkage between activities within the Group. Chaired by a representative director of our company, the Committee is composed of directors and executive officers of our company and representative directors of other Group companies.

SBS Group (SBSG) Sustainability Promotion Structures



※ The above meetings are composed of the heads and assigned staff members of administrative departments and other related departments



ENVIRONMENT

The SBS Group regards consideration for the environment as the most important social responsibility of a logistics company. We pursue reduced CO₂ emissions from a broader perspective that includes the spread of eco-driving practices among each and every driver, the introduction of eco-friendly vehicles, and energy conservation efforts at our facilities. To better promote these environmental activities, we have formulated our 3rd Medium-to-Long-Term Environmental Plan. We have named this plan the "Sincere Challenge." By "sincere," we mean being truthful, honest and faithful. As the word suggests, we will work on this plan in a sincere and proactive way.



SBS Group Mid-to-Long-Term Environmental Plan

The SBS Group will focus on the following two points in order to achieve drastic greenhouse gas reductions in Scope 1 and 2, targeting 2030 and with a view to becoming carbon neutral by 2050.

Vehicles

- Reduction of greenhouse gas emissions^{※1}
(Introduction of EVs and other next-generation vehicles, introduction of other technologies, eco-driving)

Facilities

- Promotion of renewable energy sources^{※2}
(Promoting measures such as procurement of green electricity, increased generation of renewable energy through solar power generation, increased in-house use of renewable energy, and introduction of energy-saving lighting)

※1: Depending on development trends among manufacturers

※2: Based on the energy mix in the Sixth Strategic Energy Plan

SAFETY

To the SBS Group, which operates a comprehensive logistics business in Japan and overseas, achieving safety and accident-free operations is the most important issue and forms the core of our service quality. We work to prevent accidents with a multi-faceted approach that includes raising driver awareness of safety and improving their driving skills, providing support for health management, and ensuring the safety of the vehicles we operate.

SBS Group Transportation Safety Management

Risk management	Policies and priority issues	
Transportation Safety Promotion Meeting		
Education and Awareness-raising	Accident Prevention	Safe Driving and Safe Operation Management
<ul style="list-style-type: none"> ■ Group safety education <ul style="list-style-type: none"> ● Truck safe driving training sessions ● Eco and safe driving training ● Forklift safe operation training sessions ● Logistics Quality Seminars ● Operation manager examination preparatory seminars ● Operational manager skill improvement seminars ● Courses on utilizing general aptitude diagnosis ● First-aid Classes ■ Call for proposed safety slogans 	<ul style="list-style-type: none"> ■ Accident factor analysis ■ Near miss incident information collection and dashcam video analysis ■ Risk prediction training ■ Aptitude diagnosis ■ Regular SAS screening examinations and health checkups ■ Stress checks / consultations with industrial physicians ■ Training for persons causing accidents ■ Introduction of vehicles equipped with safety features (collision avoidance, reduced braking, road deviation prevention) ■ Blood pressure measurements 	<ul style="list-style-type: none"> ■ Roll calls and alcohol checks ■ Daily inspections ■ Fitting of driving support equipment (digital tachograph, dashcam, rear-view camera) ■ Business audits, touring follow-ups, business site self-inspections ■ Acquiring certification (G-mark) as a business site with excellent safety ■ Truck driver / forklift operator contests ■ Occupational health and safety movement ■ Safe operation award

SOCIAL

In keeping with its management philosophy, the SBS Group regards living in harmony with society to be the main principle of its business activities. As a corporate citizen, we will contribute in whatever small way we can to solving social issues while valuing communication with our stakeholders and working to build relationships of trust.

※ The SBS Kamata Foundation supports the higher education of students receiving social care and facilitates research into logistics.



公益財団法人 SBS鎌田財団

COMPANY PROFILE

■ **Company Name** SBS Holdings, Inc.

■ **Representative** Masahiko Kamata, Representative Director
 Masato Taiji, Director
 Yasuhito Tanaka, Director
 Natsuki Gomi, Director
 Katsuhisa Wakamatsu, Director
 Jiro Iwasaki, Outside Director
 Yoshinobu Kosugi, Outside Director
 Chizu Sekine, Outside Director
 Yuuya Kawai, Director
 (Full-Time Audit Committee Member)
 Sachie Tsuji, Outside Director
 (Audit Committee Member)
 Eiichiro Washio, Outside Director
 (Audit Committee Member)
 Hiroshi Fujiura, Outside Director
 (Audit Committee Member)

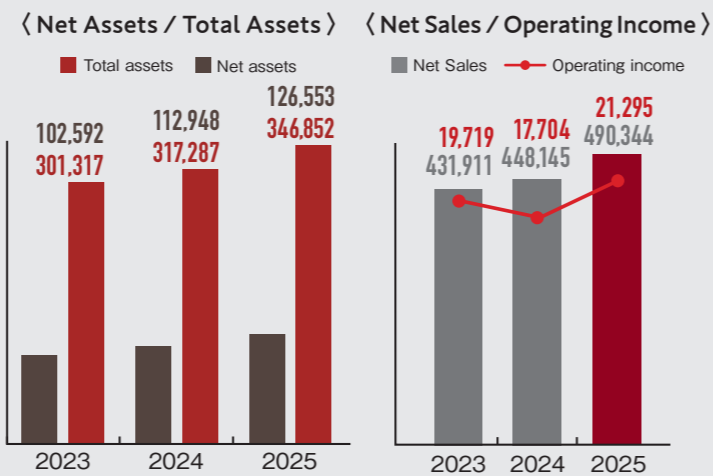
■ Established	December 16, 1987
■ Paid-in Capital	3,920 million yen
■ Net Sales	490.3 billion yen (consolidated) * For the year ended December 31, 2025
■ Number of Employees	26,316 (including 10,315 full-time employees as of December 31, 2025)
■ Head Office	Sumitomo Fudosan Shinjuku Grand Tower 25F 8-17-1, Nishi-Shinjuku, Shinjuku-ku, Tokyo, 160-6125, Japan
■ Stock Exchange Listing	Tokyo Stock Exchange Prime Market (Securities Code: 2384)

SBS Group Growth Trajectory

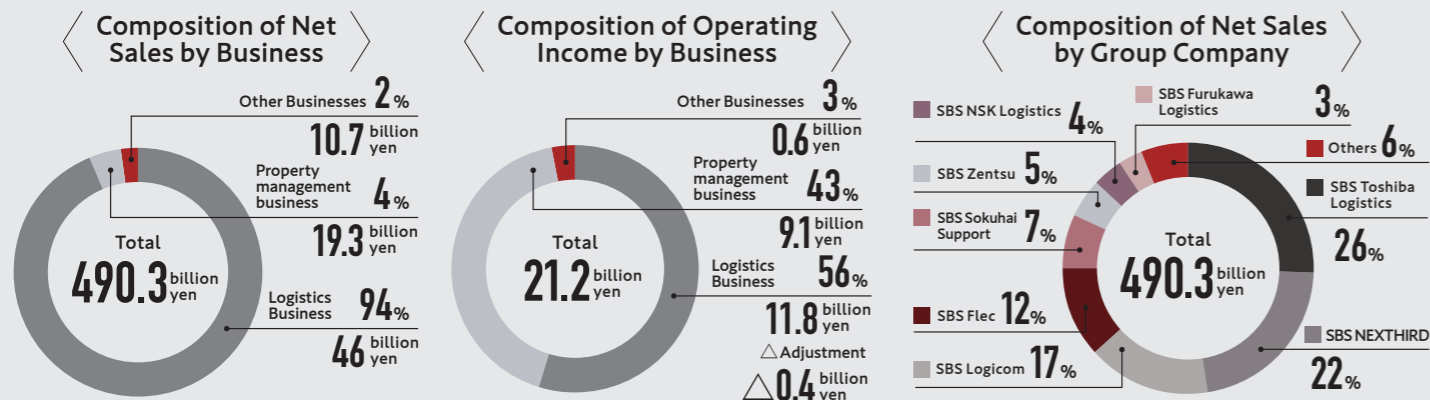
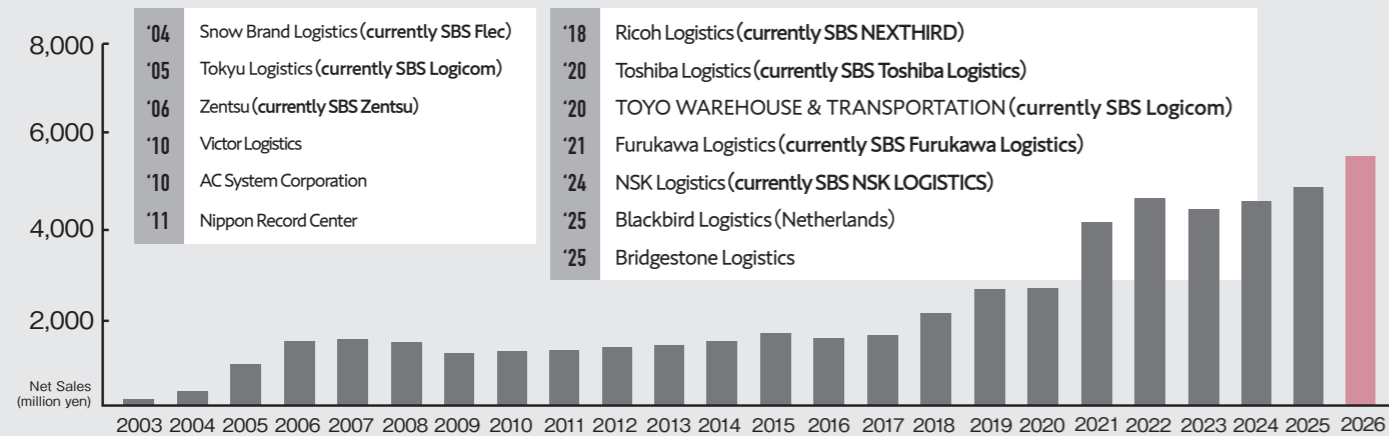
- The SBS Group has completed over 40 M&A transactions, primarily with logistics subsidiaries of major domestic manufacturers and leading logistics companies.
- Enhancing corporate value by creating Group synergies by leveraging the strengths of individual companies.

History

- December 1987 Established Kanto Sokuhai Co., Ltd. (currently SBS Holdings Inc.) in Koto-ku, Tokyo.
- September 1988 Established Kanto Sokuhai Co., Ltd. (currently SBS Sokuhai Support Co., Ltd.) as a same-day delivery business in Sumida-ku, Tokyo.
- April 1989 Changed corporate name to Sogo Butsuryu System Co., Ltd. (currently SBS Holdings Inc.).
- December 1999 Changed corporate name to SBS Co., Ltd. (currently SBS Holdings Inc.).
- December 2003 Registered shares on the over-the-counter market of the Japan Securities Dealers Association (currently JASDAQ Market of the Tokyo Stock Exchange).
- July 2004 Transitioned SBS Co., Ltd. (currently SBS Holdings Inc.) to a pure holding company.
- September 2004 Established A-MAX Co., Ltd. (currently SBS Asset Management Co., Ltd.) as a real estate securitization business and began logistics facility development and real estate securitization business.
- April 2006 Changed corporate name to SBS Holdings Inc. and relocated head office to Taihei, Sumida-ku, Tokyo.
- December 2012 Listed in the 2nd Section of the Tokyo Stock Exchange. The company celebrated its 25th anniversary at the same time.
- December 2013 Switched to the 1st Section of the Tokyo Stock Exchange.
- March 2022 SBS Group headquarters moved from Tokyo's Sumida-ku to Tokyo's Shinjuku-ku.
- April 2022 Moved to the Tokyo Stock Exchange Prime Market.



M&A Results and Change in Consolidated Sales



※FY2025 Results (December)

COMPANY GROUP

1 **SBS Holdings, Inc.**

2 **SBS Toshiba Logistics Corporation**

- | | |
|---|---|
| SBS Logistar Corporation | Toshiba Logistics (Thailand) Co., Ltd. |
| Toshiba Logistics (Shanghai) Co., Ltd. | TL Service (Thailand) Co., Ltd. |
| Toshiba Logistics (Hangzhou) Co., Ltd. | Toshiba Logistics Malaysia Sdn. Bhd. |
| Toshiba Logistics (Dalian) Co., Ltd. | Toshiba Logistics Vietnam Co., Ltd. |
| Toshiba Logistics Hong Kong Co., Ltd. | Toshiba Logistics India Private Limited |
| Toshiba Logistics (Singapore) Pte. Ltd. | Toshiba Logistics America, Inc. |
| Toshiba Logistics (Philippines) Corporation | Toshiba Logistics Europe GmbH. |
| TL Forwarding Service (Philippines) Corporation | Maruka Unyu Soko Co., Ltd. |

3 **SBS NEXTHIRD Co., Ltd.**

- SBS SAN-AI LOGISTICS Co., Ltd.
- RICOH LOGISTICS CORPORATION [USA]
- RICOH INTERNATIONAL LOGISTICS (H.K.) LTD.
- Ricoh International Freight Forwarding (Shenzhen) Co., Ltd.
- SBS Logistics (Thailand) Co., Ltd.
- SBS Vietnam Co., Ltd.
- Jass Co., Ltd.
- SBS Global Network Co., Ltd.
- EMC INC.

4 **SBS Logicom Co., Ltd.**

- SBS Freight Service Co., Ltd.
- SBS Logicom Kanto Co., Ltd.
- Kyokushin Unyu Kaihatsu Co., Ltd.

5 **SBS Flec Co., Ltd.**

- SBS FlecNet Co., Ltd.
- Hinomaru Kyuso Co., Ltd.

6 **Bridgestone Logistics Co., Ltd.**

- Towa Unyu Co., Ltd.

7 **SBS Sokuhai Support Co., Ltd.**

- Ai&Ai Co., Ltd.

8 **SBS Zentsu Co., Ltd.**

9 **SBS NSK LOGISTICS Co., Ltd.**

10 **SBS Furukawa Logistics Corp.**

- THE YOKOHAMA DRUM MANUFACTURING Co., Ltd.

11 **SBS Staff Co., Ltd.**

12 **SBS Finance Co., Ltd.**

13 **Marketing Partner, Inc.**

14 **Universal Metal**

15 **SBS Asset Management Co., Ltd.**

- L-MAX Co., Ltd.

16 **SBS Driving School Co., Ltd.**

Overseas Group Companies

- SBS Logistics (Singapore) Pte. Ltd. [Singapore]
- SBS Logistics Holdings Hong Kong Ltd. [Hong Kong]
- SBS Total Logistics Malaysia Sdn. Bhd. [Malaysia]
- PT TANGGUH JAYA PRATAMA [Indonesia]
- TAS Logistics Co., Ltd. [Thailand]
- Atlas Logistics Pvt Ltd. [India]
- SBS Europe B.V. [Netherlands]
- Blackbird Logistics B.V.

