

QRCode▲
<https://www.sbs-group.com/>

SBS Holdings,Inc.

2025 03



This is a printed product comprehensively certified as eco-friendly manufactured by a Green Printing Certified Plant using materials that comply with green standards.



The paper is made of raw materials sourced from appropriately managed FSC® certified forests and from recycled resources.



These printed materials use eco-friendly vegetable oil ink.

SBS GROUP PROFILE



Dream Logistics

Change Logistics. Shape the Future.

**Discontinuous growth through M&A and PMI activities.
Change and diversity advance personal growth and strengthen organizations.**

The SBS Group actively pursues strategic M&A activities with the aim of achieving sustainable growth and enhancing corporate value. In addition, our unique post-merger integration (PMI) approach of improving profitability without resorting to personnel restructuring has been well received by many of our stakeholders. Our M&A activities span many fields. We seek to maximize corporate value by having our logistics companies that possess a high level of expertise, from traditional major companies to small and medium-sized companies that are rooted in local communities, organically linking each other. The ability to adapt to change and ability to learn from diversity. The changes brought about by M&A activities and the opportunities to encounter different values are the source of individual growth and our competitive advantage.

**Making consulting and real logistics closely connected.
Sustainable logistics solutions only achievable because of our independence.**

There are two types of logistics: "arterial logistics" represented by logistics for production and consumption, and "venous logistics," which handles collection and resource recycling. We are able to provide sustainable logistics services that cover all areas of the recycling-oriented supply chain. In addition, in the design of solutions for the increasingly important fields of logistics consulting and logistics DX, we are able to leverage our entirely independent position to achieve the optimum solutions for customers from among a wide range of choices. More than three decades ago, the SBS Group started from a single truck. Our advanced physical logistics expertise and ability to make reliable proposals work in concert, providing one-stop solutions to customers' logistics issues.

Management Philosophy

- We provide services to achieve client satisfaction, to meet shareholders' expectations, and to be a company caring of its employees.
- Long-term prosperity is rooted in paying the necessary attention to people and in the enthusiasm of our employees.
- Social responsibility is essential to corporate growth. Harmony within the community, efforts to make those around us happy, and contribution to society far and wide, are crucial.

TOP MESSAGE

The SBS Group's DNA: Unrelenting Venture Spirit

Since it was founded in 1987, the SBS Group has reached a number of sales milestones, reaching 10 billion yen in sales by its 10th anniversary, 100 billion yen by its 20th, and 200 billion yen by its 30th year in operation. While the road was not always an easy one, the Group has remained unbothered by preconceived notions, and actively taken on risks and embraced challenges rather than avoiding them for fear of failure. The "unrelenting venture spirit" cultivated over these years has formed the DNA of the SBS Group and continues to be passed down to this day.

Hybrid management ushering in a paradigm shift in logistics

One of the measures supporting the growth of the SBS Group is M&A activities. Companies handling logistics for national brands have joined the Group one after another, and by organically linking with their highly distinctive and outstanding DNA, we have formed a hybrid corporate group. With a wide range of logistics functions spread globally, the ability to propose innovative solutions and as a "mega venture" with an unrivaled sense of speed, we will usher in a paradigm shift in the world of logistics.

For Your Dreams

- Becoming a mega venture delivering dreams around the world -

With preservation of the global environment, the declining birthrate and aging population, digital transformation and other issues, structural changes are advancing at an accelerated pace. Distilling knowledge to achieve high productivity with minimal resources and developing a prosperous future is also the responsibility of those engaging in logistics as a kind of social infrastructure. Based on our slogan, "For Your Dreams," we are not only committed to championing the success of our customers' businesses, but are also pushing forward so that we continue to represent the "infrastructure of hope" that delivers on the dreams of people around the world.



President, SBS Group
Masahiko Kamata

From startup businesses to global SCM. Logistics design optimized for customer growth

Hybrid Logistics Solutions

Development of highly functional logistics facilities, which includes the selection of locations to reduce environmental impacts along with the design of effective placement plans for LT equipment, is something that is possible precisely because of the SBS Group. We provide state-of-the-art logistics facilities which are optimized to meet the needs of our customers. Those facilities are placed on highly competitive land that is purchased through the leveraging our licenses and knowledge.



In addition to what is called "Forward Logistics," which covers everything from producers to end consumers, we also handle what is called "Reverse Logistics," wherein waste is collected, sorted and recycled. Replacing last-mile delivery vehicles with EVs will help realize sustainable logistics aimed at decarbonization.



SBS' s international multi-modal transport service offers to customers optimal solutions by combining the elements of customs clearance, forwarding and local logistics. Through coordination taking place between the overseas offices of group companies, we offer customers highly competitive and optimal services which leverage the advantages of economies of scale.



The LT and IT departments of each company work closely together to promote on-site efficiency and system integration. In addition to the phased introduction of logistics solutions into existing operations, we make proposals that best fit the customer' s logistics strategy, including comprehensive embedding from the design stage. In FY2025, we moved our LT verification facility LT Lab to Kanazawa-ku, Yokohama. New automated equipment is to be installed for performing verification.



The SBS Group promotes PMI, which serves to bolster the expertise and strengths of each group company. We can provide logistics services which require a high level of expertise and operational resources such as heavy goods, precision equipment, and food products.

EC logistics

EC物流お任せくん



In addition to EC Logistics Omakase-kun, a one-stop logistics service for online shopping that covers site construction, goods receiving and shipping, and EC home delivery, we have also launched SBS Eco-Logi Delivery, a contactless delivery service that eliminates the need for re-delivery and contributes to cost reduction. Highly specialized personnel from each Group company are involved in operations, as we aim to increase sales by 100 billion yen by 2030.

Logistics DX



Specialized organization composed of LT and IT specialists provides strong support for improvement and digital transformation of logistics sites. Two logistics robot solution systems were installed at 4th floor of EC Noda Seto Logistics Center in February 2024. We are currently building operations and connecting to warehouse management systems for use in EC logistics.

ESG management

The SBS Group promotes ESG management based on our group' s management philosophy and code of conduct. We have sorted out our important themes into four categories: the environment, safety, society, and governance. These are themes that we are working on in a continuous and multilateral manner. In addition to the key logistics issues of the environment and safety, we are deepening our understanding of human capital management and accelerating investment into the next generation of SBS Group personnel.

Strategy for Dream Logistics

SBS Toshiba Logistics

A strategic 4PL company
transforming management from logistics

A Fourth Party Logistics (4PL) company going beyond the boundaries of the Toshiba Group that proposes and realizes logistics strategies in line with management strategies for a wide range of customers. Working in partnership with SBS Group companies, SBS Toshiba Logistics provides integrated services from logistics engineering (planning and design) to the operation of logistics functions at the implementation stages, both in Japan and overseas. By providing total logistics solutions that are not only high quality but competitive, the company provides powerful support for solving customers' management issues.

Main Business Activities

■ International Logistics (Global Integrated Logistics)

Logistics operations are conducted across 14 local subsidiaries worldwide in the China and Hong Kong, Asia, Europe and North America regions. SBS Toshiba Logistics supports customers' global businesses with services that combine the optimum transportation modes that utilize the different characteristics of each region.



■ Logistics for Equipments and Heavy Products

A strength of SBS Toshiba Logistics lies in its engineering ability to achieve high levels of safety in the transportation of heavy cargo. The integrated management system enables logistics that include planning and arrangements from factory shipping through to local delivery.



■ Logistics for Mass Produced Goods

For home appliances, IT and industrial equipment, medical devices and other items, logistics services tailored to each customer's line of business are provided using the specialized know-how the company has accumulated. SBS Toshiba Logistics maintains a full understanding of the quality standards required in each industry and develops proposals to optimize costs and shorten lead times.



■ Logistics for Electronic Devices

For electronic devices and precision equipment that require delicate handling, methods for quality control and cost reduction honed through experience are used to propose optimum solutions for customers, covering everything from improved packaging, loading efficiency and delivery networks to security measures.



Message from the President

We are aiming to be a strategic logistics partner which serves to solve, through logistics, the management challenges faced by customers.

Since its establishment in 1974, our company has forged a history as a shared services company in the area of logistics for electronics manufacturers. As a 3PL (Third Party Logistics) company, we leverage the experience and know-how we have accumulated over the years to consistently deploy operations which encompass the scope of logistics engineering and design, to logistics resource procurement, storage, loading and unloading, and transportation, which we do to provide customers total logistics solutions marked by high levels of quality and competitiveness. As a 4PL (Fourth Party Logistics) company which responds to the ever-changing business environment and proposes and implements logistics in line with customer management strategies, we aim to make our services more reliable and ensure that they are even more appreciated by our customers.

SBS Toshiba Logistics Corporation
President and Representative Director

Yasushi Kanazawa



Company Name	SBS Toshiba Logistics Corporation
Representative	Yasushi Kanazawa, Representative Director
Established	October 1, 1974
Paid-in Capital	2,128 million yen
Head Office Location	Sumitomo Fudosan Shinjuku Grand Tower 25F 8-17-1, Nishi-Shinjuku, Shinjuku-ku, Tokyo, 160-6125, Japan





Improvement for Dream Logistics

SBS RICOH LOGISTICS SYSTEM

A pioneer in precision machinery logistics
that has mastered improvement capabilities

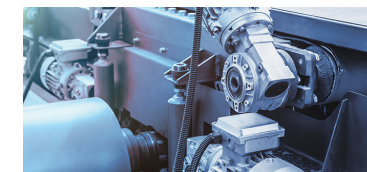
Managing the supply chains of precision equipment manufacturers played a key part in the establishment of SBS RICOH LOGISTICS SYSTEM. With the impressive quality and "KAIZEN" capabilities for which national brands are renowned in our DNA, we support the success of our customers through domestic and overseas third party logistics (3PL).

With our outstanding logistics technologies we continue to propose the best methods for a wide range of customers' logistics needs based on a backbone of "recycling-oriented logistics" that integrates procurement, production, sales and venous logistics.

Main Business Activities

Logistics for Precision Equipment (Machine Delivery Services)

From electronic components to large copiers and medical devices weighing hundreds of kilograms, our expertise lies in the transportation of precision equipment that is sensitive to external factors such as vibrations, impacts, temperature, humidity and static electricity.



Logistics Technology

SBS RICOH LOGISTICS SYSTEM is involved in research into cutting edge technologies in the logistics field and supporting their adoption by customers.

Process design and flow lines are verified using material handling and information systems. This approach achieves optimum logistics operations.



Supply Chain Logistics

Covers procurement, production and sales up to the last mile, as well as the collection and processing of products and goods.

Using its global network as a base, SBS RICOH LOGISTICS SYSTEM provides shipping rates that take advantage of economies of scale, and trade services offering multimodal logistics services covering both Japan and overseas.



Message from the President

We provide recycling-oriented logistics combining both finesse and boldness.

Since it was established as a manufacturer-linked logistics involved in the transportation of precision equipment for Ricoh Company, Ltd. in February 1964, SBS RICOH LOGISTICS SYSTEM has continued to develop as a comprehensive 3PL provider.

Our strengths lie in our improvement capabilities and enable us to continue to propose the best ways to deal with customer needs. Using technologies, expertise, IT capabilities and logistics technologies (LT) cultivated over many years, our foundations are based on integrated recycling-oriented logistics that cover the range from arterial logistics (package design, procurement, production and sales) to venous logistics (collection, recycling and processing).

We recognize the importance of logistics as part of the social infrastructure and all employees will work together towards achieving the concurrent development of customers, society and the company.



SBS RICOH LOGISTICS SYSTEM CO., LTD.
Representative Director & President

Katsuhisa Wakamatsu



Company Name	SBS RICOH LOGISTICS SYSTEM CO., LTD.
Representative	Katsuhisa Wakamatsu, Representative Director
Established	February 1, 1964
Paid-in Capital	448 million yen
Head Office Location	Sumitomo Fudosan Shinjuku Grand Tower 25F 8-17-1, Nishi-Shinjuku, Shinjuku, Tokyo, 160-6125, Japan



Flexibility for Dream Logistics

SBS Logicom

An All-Rounder in Total Logistics

As a partner company to its customers, SBS Logicom provides total logistics services covering everything from logistics consulting and strategy to planning and operations.

With various waves of change sweeping through the logistics industry, SBS Logicom continues to make strides forward as a logistics company meeting the needs of a wide range of customers across various industries and supporting social infrastructure through a focus on warehouse management, cargo handling and distribution processing services, along with logistics centers, truck and rail transportation, special transportation, customs clearance and international transportation, government, corporate and school relocations, and on-site logistics.

Main Business Activities

■ 3PL solutions that excel in the field

SBS Logicom covers a wide range of industries from manufacturer logistics to retail distribution including online sales. A field-savvy consulting team provides support from developing plans for requirement definitions in the design of facilities, equipment, systems and operation, through to launch and stable operation.



■ Versatile transportation capabilities

A transportation system that covers upstream and downstream supply chain operations. We operate a rich lineup of vehicles, from vehicles for general consumer goods to special vehicles capable of transporting heavy goods, as well as container transport by sea and rail. From factory to end user delivery, we can meet all customer needs.



■ Optimum logistics center operation

SBS Logicom has an extensive track record handling high-mix, small-lot goods from home improvement centers, department stores, drug stores, interior retailers, supermarkets, as well as the music, video and fashion industries. SBS Logicom also provides one-stop services for e-commerce logistics that add extras including fulfillment and home delivery.



Message from the President

Supporting customers with mobility and a wide range of logistics capabilities

SBS Logicom's 3PL services have been evolving over the years. We work with our customers on planning and execution, from the proposal of a logistics base to preparation for start-up, stable operation, and subsequent improvement activities. In recent years, we have expanded our scope to include solutions for the rapidly growing e-commerce (EC) logistics industry. One of our strengths is our ability to offer flexible and unique proposals in collaboration with distinctive companies both inside and outside the SBS Group. With the logistics industry likely to be restructured in the future, we will continue to grow together with our customers by responding to changes and boldly taking on the challenge of solving high level problems.



SBS Logicom Co., Ltd.
Director,
Senior Managing Executive Officer
Masato Tsuruoka



Company Name	SBS Logicom Co., Ltd.
Representative	Masahiko Kamata, Representative Director
Established	January 26, 1940
Paid-in Capital	101 million yen
Head Office Location	Sumitomo Fudosan Shinjuku Grand Tower 25F 8-17-1, Nishi-Shinjuku, Shinjuku, Tokyo, 160-6125, Japan



Specialty for Dream Logistics

SBS Flec

A company specializing in food logistics that pushes the limits of quality

SBS Flec

Founded in 1956 as Yukijirushi Logistics Co., Ltd. Today, we are one of the few 3PL companies in Japan that can handle products in all three temperature ranges: dry (room temperature), chilled (refrigerated), and frozen. We provide comprehensive support for food manufacturers' products, from production to stocking in stores. As a leading cold chain logistics company, we deliver safe and secure food products.

Main Business Activities

Food 3PL

SBS Flec fulfills the need to reduce logistics costs by carrying out all logistics management operations from the production sites of food manufacturers to their customers. SBS Flec can also be safely entrusted in on-site logistics services at customers' manufacturing plants.

Food logistics services at the three temperature zones

SBS Flec specializes in food logistics and handles cargo at all three of the temperature zones, dry, chilled and frozen. The company also strives to enhance the tangible and intangible aspects of its services, including improvements to delivery trucks, logistics facility renovation and new construction, introduction of information systems, and the acquisition of various certifications.

Logistics centers specializing in food

SBS Flec has developed logistics center, transport and delivery networks that cover the entire country. A wide range of services including information system functions and call center operations are provided, with a focus on in-center operations, transportation and delivery.

Message from the President

Enhancing trust in food infrastructure

There has been rapidly growing interest in food safety and security. With industry-leading expertise in food logistics as our backbone, at SBS Flec we use our nationwide logistic center, transportation and delivery networks to achieve highly trusted food logistics that support society. To fulfill this mission, we of course value people. With the entire organization backing the motivation of each employee, we continue to take on the challenge of innovations supporting a prosperous future for our customers and society with new ideas and ingenuity.



SBS Flec Co., Ltd.
President and Representative Director
Mitsugu Kakushi



Company Name	SBS Flec Co., Ltd.
Representative	Mitsugu Kakushi, Representative Director
Paid-in Capital	218.95 million yen
Head Office Location	Sumitomo Fudosan Shinjuku Grand Tower 25F 8-17-1, Nishi-Shinjuku, Shinjukuku, Tokyo, 160-6125, Japan

Acceleration for Dream Logistics

SBS Sokuhai Support

A delivery partner accompanying and accelerating customer businesses

SBS Sokuhai Support

In December 1987, the SBS Group started SBS Sokuhai Support as a same-day delivery business. Revolutionary for its time, this business model is still utilized by many users.

More recently, SBS Sokuhai Support has been using the expertise it has developed in the same-day delivery business for the e-commerce home delivery business, which is experiencing rapid growth in demand, and is in the process of expanding its operations to major Japanese cities. The company also combines venous logistics functions to play a part in recycling-oriented logistics.

Main Business Activities

Same-day delivery for corporate customers, home delivery

With SBS Same-Day Delivery Service and E-Commerce Home Delivery as core operations, SBS Sokuhai Support provides a range of delivery services including spot and charter deliveries. These services can be used as the "undercarriage" to significantly improve mobility of a customer's business.

Waste collection and intermediate processing

SBS Sokuhai Support handles the collection, transportation and recycling of waste with a focus on the Tokyo metropolitan area. It also purchases office and communications equipment, machine tools and office fixtures.

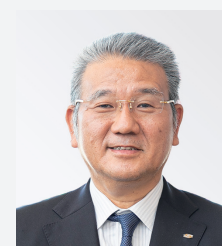
Manufacturing of store fixtures and distribution processing for the apparel industry

Operation of dedicated logistics centers for retailers, manufacturing and maintenance of store fixtures and equipment. The company also offers advanced processing services for the apparel industry such as embroidery, spangles and rhinestones.

Message from the President

Expanding the e-commerce delivery service alongside same-day delivery for corporate customers

SBS Sokuhai Support handles same-day delivery of small parcels between companies, which is a business established by the SBS Group. We have continued to gain wisdom and do our utmost to fulfill the expectations of customers who believed in us and did business with us when we first started out as a small venture company with little power. Moving forward, we will also focus on the rapidly expanding field of e-commerce delivery in a bid to achieve even greater growth by demonstrating stunning mobility and synergy with the SBS Group.



SBS Sokuhai Support Co., Ltd.
Representative Director
Masahiko Kamata



Company Name	SBS Sokuhai Support Co., Ltd.
Representative	Masahiko Kamata, Representative Director
Paid-in Capital	100 million yen
Head Office Location	1-5-29 Shinsuna, Koto-ku, Tokyo, 136-0075, Japan

Creation for Dream Logistics

SBS Zentsu

An innovator in the food supply chain responding to needs with "creative logistics"

SBS Zentsu

SBS Zentsu provides total support for the food supply chain by building logistics systems that consolidate pre-cooled and temperature-controlled transportation, joint delivery and food in four temperature zones. In response to increasingly sophisticated and complex logistics needs, SBS Zentsu uses the "creativity" it has cultivated providing operations and services for many years as a powerful tool, overcoming difficulties and issues one after another while continually creates new solutions.

Main Business Activities

■ Co-op home delivery business

From the Tohoku region in the north to the Chugoku region in the west, approximately 1,400 trucks and more than 1,500 employees are engaged in the individual home delivery business for co-ops across Japan, which requires advanced customer service skills that go beyond simple deliveries.

■ Operation of pre-cooling, cold chain transportation and freezing refrigeration centers

We own and operate a large number of refrigerated vehicles that can handle a variety of temperature ranges, providing high quality coverage across the supply chain. At our freezing and refrigeration centers, we are expanding our business across the entire food cold chain, utilizing our strengths in distribution processing. This includes fruits and vegetables, which are notoriously difficult to handle.

■ E-commerce logistics business

Utilizing our detailed delivery network and the quality of professional sales drivers we have fostered in the home delivery business, we are actively expanding our business as a last-mile leader in e-commerce logistics, a field that continues to grow rapidly.

Message from the President

Taking on the challenge of further development with creative logistics

Since its founding, the goal at SBS Zentsu has been to achieve creative logistics in order to meet the needs of our customers to the fullest. We have developed with a focus on the logistics business for co-ops across Japan, which requires extremely high quality control. We will strive for further growth as a company while focusing on expanding our areas of business, including 3PL and e-commerce logistics, leveraging our company's strengths developed in the 40 plus years since our founding—our ability to propose solutions and our ability to take action—and our comprehensive capabilities that combine and enhance the experience and technologies we have gained over the years.



SBS Zentsu Co., Ltd.
Representative Director
Nobuyuki Ikeda



Company Name	SBS Zentsu Co., Ltd.
Representative	Nobuyuki Ikeda, Representative Director
Paid-in Capital	83.45 million yen
Head Office Location	Sumitomo Fudosan Shinjuku Grand Tower 25F 8-17-1, Nishi-Shinjuku, Shinjukuku, Tokyo, 160-6125, Japan

Safety and Quality for Dream Logistics

SBS NSK Logistics

Experts in the logistics of precision machinery parts in the pursuit of safety, accuracy and efficiency

Leveraging logistics know-how accumulated at the NSK Group, a leading manufacturer of bearings and precision machinery parts, we provide logistics plans that are in step with the new times.



SBS NSK Logistics

Message from the President

Building sustainable logistics and achieving further growth and development

Our company joined the SBS Group on October 1, 2024. By leveraging the SBS Group's abundant knowledge and resources as well as the NSK Group's long-standing expertise and technology, we hope to build sustainable logistics functions. We aim for further growth and development as a logistics company specializing in the storage, transportation, and handling of bearings and precision machinery components.



SBS NSK Logistics Co., Ltd.
Representative Director
Yoshitaka Yoneyama

Company Name	SBS NSK Logistics Co., Ltd.
Representative	Yoshitaka Yoneyama, Representative Director
Paid-in Capital	90 million yen
Main Business Activities	■ Transportation, storage, handling, and packing of bearings, automotive-related products, precision machinery products, etc.
Head Office Location	(Since May, 2025) Sumitomo Fudosan Shinjuku Grand Tower 25F 8-17-1, Nishi-Shinjuku, Shinjukuku, Tokyo, 160-6125, Japan



Solution for Dream Logistics

SBS Furukawa Logistics

A logistics solutions partner that solves logistics challenges facing customers

In addition to our years of accumulated knowledge and skills such as in the transportation and delivery, storage, and distribution processing of electric cables, functional plastic products, and nonferrous metal products, we will integrate the SBS Group's state-of-the-art LT and IT technologies, logistics networks, and know-how to solve various logistics issues in our customers' supply chains.



SBS Furukawa Logistics

Message from the President

Focused on solving customers' logistics problems

Since 1980. In addition to the knowledge and skills in the transportation, storage, and distribution processing of products for electric power, telecommunications, and automobiles that we have developed through our collaborative operations with the Furukawa Electric Group and other customers and business partners, we integrate the SBS Group's leading-edge technologies and know-how to solve various logistics issues in the supply chain through cooperation with our Group companies.



SBS Furukawa Logistics Corp.
Representative Director
Shingo Morita

Company Name	SBS Furukawa Logistics Corp.
Representative	Shingo Morita, Representative Director
Paid-in Capital	292 million yen
Main Business Activities	■ Transportation and delivery (including customs clearance) and storage business, Distribution processing and packaging business, Recycling business
Head Office Location	Sumitomo Fudosan Shinjuku Grand Tower 25F 8-17-1, Nishi-Shinjuku, Shinjukuku, Tokyo, 160-6125, Japan



Expansion for Dream Logistics

SBS Global Network

Extensive overseas logistics network

Based on its extensive overseas distribution network that extends from Japan and Asia and the world, SBS Global Network supports supply chains in Japan and abroad.

The company conducts analyses of the current status of international logistics being implemented by customers (consulting).

It then proposes and implements optimum import and export operations based on cargo characteristics and supply chain strategies.



Company Name	SBS Global Network Co., Ltd.
Representative	Yasunori Kudo, Representative Director
Established	March 1987
Paid-in Capital	50 million yen
Head Office Location	Sumitomo Fudosan Shinjuku Grand Tower 25F 8-17-1, Nishi-Shinjuku, Shinjuku, Tokyo, 160-6125, Japan
Lines of Business	Import and export services, domestic cargo pickup and delivery services, transportation services with overseas parties, other additional services

SBS Freight Service

From transportation and delivery to logistics center operation

Transportation and delivery network covering the Pacific side of eastern Japan to Kansai.

SBS Freight Service offers an extensive range of transportation services from three-temperature-zone transportation, special transportation such as shipping for filming locations, marine container drayage transportation, warehousing, storage and distribution processing.

The company is also focusing on distribution center operation in response to expanding e-commerce needs.



Company Name	SBS Freight Service Co., Ltd.
Representative	Hirotsugu Nakatsuka, Representative Director
Established	June 1944
Paid-in Capital	100 million yen
Head Office Location	5-32-50, Sugita, Isogo-ku, Yokohama-shi, Kanagawa Prefecture, 235-0033, Japan.
Lines of Business	General transportation, special transportation, marine container-based transportation, logistics center operation, warehousing and storage

SBS Staff

Placing the right staff in speedy fashion



Company Name	SBS Staff Co., Ltd.
Representative	Osanori Watanabe, Representative Director
Established	June 1997
Paid-in Capital	70 million yen
Head Office Location	Sumitomo Fudosan Shinjuku Grand Tower 25F 8-17-1, Nishi-Shinjuku, Shinjuku, Tokyo, 160-6125, Japan
Lines of Business	Worker dispatch business, fee-based job placement business, business process outsourcing (BPO) business, business outsourcing, comprehensive human resource service business, operation of human resources portal site

SBS Finance

The optimum finance for logistics

SBS Finance provides a wide range of services from leasing and sales to insurance. As a finance company excelling in the area of logistics, SBS Finance provides a range of functions including the joint purchasing of consumables for logistics businesses.



Company Name	SBS Finance Co., Ltd.
Representative	Hiroshi Aida, Representative Director
Established	April 1991
Paid-in Capital	150 million yen
Head Office Location	Sumitomo Fudosan Shinjuku Grand Tower 25F 8-17-1, Nishi-Shinjuku, Shinjuku, Tokyo, 160-6125, Japan
Lines of Business	Vehicle and office equipment leasing business, fuel and tire sales business, life and non-life insurance agency business

Marketing Partner

E-commerce business professionals

Providing one-stop construction and operation of e-commerce sites. We support e-commerce businesses from the four aspects of marketing, analysis, creativity, and fulfillment, and carry out the planning, development, and operation of e-commerce sites for the pet food brands Pochi, tama, and J&C.



Company Name	Marketing Partner, Inc.
Representative	Shinji Gonda, President and Representative Director
Established	March 1998
Paid-in Capital	10 million yen
Head Office Location	Sumitomo Fudosan Shinjuku Grand Tower 25F 8-17-1, Nishi-Shinjuku, Shinjuku, Tokyo, 160-6125, Japan
Lines of Business	Planning, design and operation for direct marketing with a focus on e-commerce support, web promotion, creative development, data mining, fulfillment and planning, development, import, wholesale and online shopping business of premium pet food

SBS Driving School

Developing safe drivers

We operate driving schools with the aim of developing safe drivers in the SBS Group and local community. Students can obtain licenses for regular cars, mid-sized vehicles and motorcycles.



Company Name	SBS Driving School Co., Ltd.
Representative	Tadaaki Ooto, Representative Director
Established	March 1963
Paid-in Capital	22 million yen
Head Office Location	341 Naganumacho, Inage-ku, Chiba-shi, Chiba Prefecture, 263-0005, Japan
Lines of Business	Driving training business (SBS Driving School Inage and Anesaki Driving School)

Development for Dream Logistics

SBS Asset Management

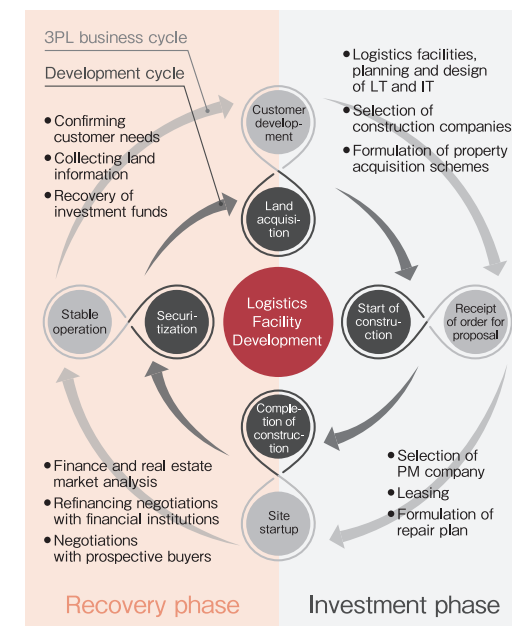
An asset manager expanding
high-functionality logistics nationwide

SBS Asset Management is an asset management company responsible for developing the logistics facilities of the SBS Group. Using expert knowledge and know-how regarding finance, real estate and logistics, the company independently develops specialized logistics facilities optimized for 3PL. With a strength in highly functional design informed by an intimate knowledge of logistics in the field, SBS Asset Management handles to increasingly sophisticated logistics while responding to changes in the value chain based on in-depth research. SBS Asset Management operates a total asset management business specializing in everything from land acquisition and leasing to asset securitization.

〈 Logistics Facility Development 〉

SBS Asset Management develops dedicated 3PL logistics facilities in-house, utilizing expert knowledge and know-how regarding finance, real estate and logistics. Proposals for customer logistics sites are developed from the design stages.

The SBS Group's logistics facility development activities are essential to providing 3PL services that satisfy customers. High-level functionality and design that can only be achieved with an intimate knowledge of customer needs and logistics in the field, and the development of logistics facilities by a group of asset management professionals with advanced financial knowledge and familiarity with the real estate market, have been met with strong approval from shippers and investors alike.



Property Name / Current Use	Head Office	Site Area (㎡)		Completion of construction	Securitization
		Total Floor Area (㎡)			
(provisional name)Tomisato Logistics Center	Tomisato, Chiba Prefecture	51,919 118,569		August 26 (Planned)	
Noda Seto Logistics Center Building A	• SBS Holdings, Inc., SBS RICOH LOGISTICS SYSTEM CO., LTD, SBS Logicom Co., Ltd.	Noda, Chiba Prefecture 73,271 166,385		January 24	
Noda Seto Logistics Center Building B (Planned)		Noda, Chiba Prefecture 55,746 131,298			
Kirishima Logistics Center(Planned)		Kirishima, Kagoshima Prefecture 11,665 7,186		June 2026	
Ichinomiya Logistics Center	• SBS RICOH LOGISTICS SYSTEM CO., LTD.	Ichinomiya, Aichi Prefecture 29,683 69,794		March 2023	
Yokohama Kanazawa Logistics Center	• SBS RICOH LOGISTICS SYSTEM CO., LTD. Logistics Center Yokohama Kanazawa	Kanazawa Ward, Yokohama 26,612 69,794		October 2021	March 2023
Nanko Logistics Center	• SBS Logicom Co., Ltd. Nanko Logistics Center Branch	Suminoe Ward, Osaka 24,858 61,282		March 2019	May 2021
Ami Logistics Centers	• SBS Flec Co., Ltd. Ami Logistics Center Branch	Ami, Inashiki District, Ibaraki Prefecture 31,303 8,012		June 2018	
Tokorozawa Logistics Center	• SBS Logicom Co., Ltd. Tokorozawa Logistics Center Branch	Tokorozawa, Saitama Prefecture 27,824 34,805		March 2016	
Shin-Sugita Logistics Center	• SBS Logicom Co., Ltd. Shin-Sugita Logistics Center Branch • SBS Freight Service Co., Ltd. Head Office / Shin-Sugita Center	Isogo Ward, Yokohama 17,150 38,265		March 2016	January 2024
Nagatsuta Logistics Center		Midori Ward, Yokohama 47,577 43,755		January 2015	March 2020
Noda Yoshiharu Logistics Center	• SBS Logicom Co., Ltd. Noda Logistics Center Branch	Noda, Chiba Prefecture 17,050 31,748		March 2009	July 2015
Tokorozawa Warehouse	• SBS Logicom Co., Ltd. Tokorozawa Branch	Tokorozawa, Saitama Prefecture 8,696 5,801		November 2009	March 2015
Noda Logistics Center	• SBS Logicom Co., Ltd. Noda Logistics Center Branch	Noda, Chiba Prefecture 24,064 35,893		March 2009	September 2010
Iruma Logistics Center	• SBS Logicom Co., Ltd. Iruma Branch	Iruma, Saitama Prefecture 26,126 26,203		January 2008	September 2010
Iwatsuki Logistic Center	• SBS Logicom Co., Ltd. Noda Yoshiharu Logistics Center Branch, Iwatsuki Sales Office	Iwatsuki Ward, Saitama City 40,011 29,981		December 2007	April 2018
Kawagoe Logistics Center	• SBS Logicom Co., Ltd. Kawagoe Logistics Center Branch	Kawagoe, Saitama Prefecture 32,665 47,770		November 2007	June 2016
Chikuma Logistics Center		Chikuma, Nagano Prefecture 11,137 6,299		August 2007	December 2017
Nishinohon Logistics Center		Kyotanabe, Kyoto Prefecture 25,853 37,676		March 2007	August 2014

〈 Rent Business 〉

We own and manage around 35 properties including roadside stores, condominiums and city-center offices, primarily in the Tokyo metropolitan area.



Minami Shinjuku SK Building

(Office Building)
Site Area : 1,143㎡
Total Floor Area : 7,531㎡
Completion : July 1997



Shibuya South Exit Building

(Office Building)
Site Area : 1,416㎡
Total Floor Area : 9,013㎡
Completion : January 2000



Makuhari Building

(Roadside Store)
Site Area : 2,655㎡
Total Floor Area : 1,595㎡
Completion : June 1990



〈 Solar Power Generation 〉

We aim to contribute to the realization of a decarbonized society by making effective use of our owned assets, including the rooftops of logistics facilities. Our power generating capacity is around 19 megawatts. The generated electricity is sold and also used internally.



Company Name	SBS Asset Management Co., Ltd.
Representative	Yasuhiko Ueda, Representative Director
Established	September 3, 2004
Paid-in Capital	160 million yen
Head Office Location	Sumitomo Fudosan Shinjuku Grand Tower 25F 8-17-1, Nishi-Shinjuku, Shinjuku, Tokyo, 160-6125, Japan



Sustainability

The SBS Group has always been committed to achieving sustainable growth and resolving social issues. However, in light of the significant changes in our business environment and the growing importance of achieving both a sustainable society through the resolution of social issues and the sustainable enhancement of corporate value, the Group has established the following sustainability-related structures.

SBS Group Sustainability Structure

SBS Group Sustainability Policy

Basic Philosophy

Based on the spirit of the SBS Group's management philosophy of respecting people and being socially responsible, all our employees are aware of their role as members of the international community, and actively promote sustainable initiatives in accordance with the following policy in order to contribute to the stability of people's lives and the realization of a sustainable society through logistics, a part of the social infrastructure.

The SBS Group connects with people and takes their wishes seriously.

- We protect and respect human rights and diverse values in all our corporate activities.
- We provide a corporate culture in which diverse human resources can work together with mutual respect, and an environment in which they can work safe and healthily.
- By conducting appropriate training in a timely manner, we develop human resources who can contribute to society by creating value.

The SBS Group connects with society and meets social expectations.

- We comply with laws, regulations, and international rules, conduct our business in a fair and honest manner, and take thorough anti-corruption measures.
- We respect social rules, build mutual trust with local communities, and contribute to society through our business activities.
- We strive to faithfully meet the requests and expectations of all stakeholders through appropriate information disclosure and responsible dialogue.

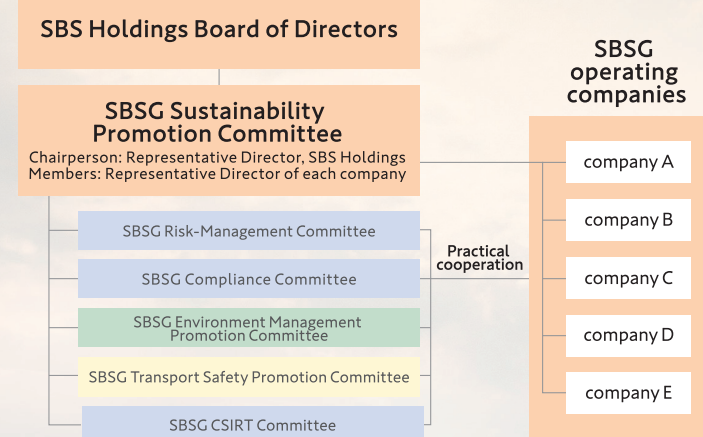
The SBS Group connects with the Earth and cares about its future.

- We place importance on thorough environmental management, and do our utmost to protect the global environment by reducing the environmental impact of all our business activities.
- We are constantly aware of the risks of climate change and promote efforts to reduce greenhouse gas emissions in order to achieve a decarbonized society.

SBS Group Sustainability Promotion Committee

The SBS Group established the Sustainability Promotion Committee in January 2023 in order to develop and strengthen the management system in accordance with our Sustainability Policy, and to implement sustainability management Groupwide to achieve both a sustainable society and sustainable enhancement of our corporate value. The Committee is positioned as an advisory body to the Board of Directors and is responsible for formulating sustainability strategies and activity policies for the SBS Group as a whole, and for monitoring KPI indicators and linkage between activities within the Group. Chaired by a representative director of our company, the Committee is composed of directors and executive officers of our company and representative directors of other Group companies.

SBS Group (SBG) Sustainability Promotion Structures



※ The above meetings are composed of the heads and assigned staff members of administrative departments and other related departments

ENVIRONMENT

The SBS Group regards consideration for the environment as the most important social responsibility of a logistics company. We pursue reduced CO₂ emissions from a broader perspective that includes the spread of eco-driving practices among each and every driver, the introduction of eco-friendly vehicles, and energy conservation efforts at our facilities. To better promote these environmental activities, we have formulated our 3rd Medium-to-Long-Term Environmental Plan. We have named this plan the "Sincere Challenge." By "sincere," we mean being truthful, honest and faithful. As the word suggests, we will work on this plan in a sincere and proactive way.



SBS Group Mid-to-Long-Term Environmental Plan

The SBS Group will focus on the following two points in order to achieve drastic greenhouse gas reductions in Scope 1 and 2, targeting 2030 and with a view to becoming carbon neutral by 2050.

Vehicles

- Reduction of greenhouse gas emissions^{※1}
(Introduction of EVs and other next-generation vehicles, introduction of other technologies, eco-driving)

Facilities

- Promotion of renewable energy sources^{※2}
(Promoting measures such as procurement of green electricity, increased generation of renewable energy through solar power generation, increased in-house use of renewable energy, and introduction of energy-saving lighting)

※1: Depending on development trends among manufacturers

※2: Based on the energy mix in the Sixth Strategic Energy Plan

SAFETY

To the SBS Group, which operates a comprehensive logistics business in Japan and overseas, achieving safety and accident-free operations is the most important issue and forms the core of our service quality. We work to prevent accidents with a multi-faceted approach that includes raising driver awareness of safety and improving their driving skills, providing support for health management, and ensuring the safety of the vehicles we operate.

SBS Group Transportation Safety Management

Risk management		Policies and priority issues
Transportation Safety Promotion Meeting		
Education and Awareness-raising	Accident Prevention	Safe Driving and Safe Operation Management
<ul style="list-style-type: none"> ■ Group safety education <ul style="list-style-type: none"> ● Truck safe driving training sessions ● Eco and safe driving training ● Forklift safe operation training sessions ● Logistics Quality Seminars ● Operation manager examination preparatory seminars ● Operational manager skill improvement seminars ● Courses on utilizing general aptitude diagnosis ● First-aid Classes ■ Call for proposed safety slogans 	<ul style="list-style-type: none"> ■ Accident factor analysis ■ Near miss incident information collection and dashcam video analysis ■ Risk prediction training ■ Aptitude diagnosis ■ Regular SAS screening examinations and health checkups ■ Stress checks / consultations with industrial physicians ■ Training for persons causing accidents ■ Introduction of vehicles equipped with safety features (collision avoidance, reduced braking, road deviation prevention) ■ Blood pressure measurements 	<ul style="list-style-type: none"> ■ Roll calls and alcohol checks ■ Daily inspections ■ Fitting of driving support equipment (digital tachograph, dashcam, rear-view camera) ■ Business audits, touring follow-ups, business site self-inspections ■ Acquiring certification (G-mark) as a business site with excellent safety ■ Truck driver / forklift operator contests ■ Occupational health and safety movement ■ Safe operation award

SOCIAL

In keeping with its management philosophy, the SBS Group regards living in harmony with society to be the main principle of its business activities. As a corporate citizen, we will contribute in whatever small way we can to solving social issues while valuing communication with our stakeholders and working to build relationships of trust.

※ The SBS Kamata Foundation supports the higher education of students receiving social care and facilitates research into logistics.



公益財団法人 SBS鎌田財団



COMPANY PROFILE

■ Company Name	SBS Holdings, Inc.
■ Representative	Masahiko Kamata, Representative Director Shuichi Hoshi, Director Masato Taiji, Director Yasuhito Tanaka, Director Natsuki Gomi, Director Katsuhisa Wakamatsu, Director Jiro Iwasaki, Outside Director Yoshinobu Kosugi, Outside Director Chizu Sekine, Outside Director Yuuya Kawai, Director (Full-Time Audit Committee Member) Sachie Tsuji, Outside Director (Audit Committee Member) Washio Eiichiro, Outside Director (Audit Committee Member)
■ Established	December 16, 1987
■ Paid-in Capital	3,920 million yen
■ Net Sales	448.1 billion yen (consolidated) * For the year ended December 31, 2024
■ Number of Employees	23,513 (including 10,759 full-time employees as of December 31, 2024)
■ Head Office	Sumitomo Fudosan Shinjuku Grand Tower 25F 8-17-1, Nishi-Shinjuku, Shinjukuku, Tokyo, 160-6125, Japan Tel : +81-3-6772-8200 (main switchboard)
■ Business Descriptions	As a holding company, SBS Holdings formulates and promotes overall Group management strategy, audits Group management and conducts other business management activities.
■ Stock Exchange Listing	Tokyo Stock Exchange Prime Market (Securities Code: 2384)

■ History

December	1987	Established Kanto Sokuhai Co., Ltd. (currently SBS Holdings Inc.) in Koto-ku, Tokyo.
September	1988	Established Kanto Sokuhai Co., Ltd. (currently SBS Sokuhai Support Co., Ltd.) as a same-day delivery business in Sumida-ku, Tokyo.
April	1989	Changed corporate name to Sogo Butsuryu System Co., Ltd. (currently SBS Holdings Inc.).
December	1999	Changed corporate name to SBS Co., Ltd. (currently SBS Holdings Inc.).
December	2003	Registered shares on the over-the-counter market of the Japan Securities Dealers Association (currently JASDAQ Market of the Tokyo Stock Exchange).
May	2004	Acquired shares in Yukijirushi Butsuryu Co., Ltd. (currently SBS Flec Co., Ltd.).
July	2004	Transitioned SBS Co., Ltd. (currently SBS Holdings Inc.) to a pure holding company.
September	2004	Established A-MAX Co., Ltd. (currently SBS Asset Management Co., Ltd.) as a real estate securitization business and began logistics facility development and real estate securitization business.
June	2005	Acquired shares in Tokyu Logistic Co., Ltd. (currently SBS Logicom Co., Ltd.).
January	2006	Acquired shares in food logistics company Zentsu Co., Ltd. (now SBS Zentsu Co., Ltd.).
April	2006	Changed corporate name to SBS Holdings Inc. and relocated head office to Taihei, Sumida-ku, Tokyo.
December	2012	Listed in the 2nd Section of the Tokyo Stock Exchange. The company celebrated its 25th anniversary at the same time.
December	2013	Switched to the 1st Section of the Tokyo Stock Exchange.
August	2018	Acquired shares in RICOH LOGISTICS SYSTEM (currently SBS RICOH LOGISTICS SYSTEM)
November	2020	Acquired shares in Toshiba Logistics Corporation (currently SBS Toshiba Logistics Corporation).
January	2021	Acquisition of shares in TOYO WAREHOUSE & TRANSPORTATION CO., LTD. (merged with SBS Logicom in October 2023), a subsidiary of SMC Corp.
December	2021	Acquisition of shares in Furukawa Logistics Corp.(currently SBS Furukawa Logistics Corp.), a logistics subsidiary of Furukawa Electric Co., Ltd.
March	2022	SBS Group headquarters moved from Tokyo's Sumida Ward to Tokyo's Shinjuku Ward
April	2022	Moved to the Tokyo Stock Exchange Prime Market Our group uniforms have been redesigned
October	2024	Acquired shares in NSK Logistics Co., Ltd. (currently SBS NSK Logistics Co., Ltd.).

COMPANY GROUP

1	SBS Holdings, Inc.
2	SBS Toshiba Logistics Corporation
SBS Logistar Corporation	Toshiba Logistics (Thailand) Co., Ltd.
Toshiba Logistics (Shanghai) Co., Ltd.	TL Service (Thailand) Co., Ltd.
Toshiba Logistics (Hangzhou) Co., Ltd.	Toshiba Logistics Malaysia Sdn. Bhd.
Toshiba Logistics (Dalian) Co.,Ltd.	Toshiba Logistics Vietnam Co., Ltd.
Toshiba Logistics Hong Kong Co.,Ltd.	Toshiba Logistics India Private Limited
Toshiba Logistics (Singapore) Pte. Ltd.	Toshiba Logistics America, Inc.
Toshiba Logistics (Philippines) Corporation	Toshiba Logistics Europe GmbH.
TL Forwarding Service (Philippines) Corporation	
3	SBS RICOH LOGISTICS SYSTEM CO., LTD.
SBS SAN-AI LOGISTICS CO., LTD.	
RICOH LOGISTICS CORPORATION [USA]	
RICOH INTERNATIONAL LOGISTICS (H.K.) LTD.	
RL Ricoh International Freight Forwarding (Shenzhen) Co., Ltd.	
SBS Logistics (Thailand) Co., Ltd.	
SBS Vietnam Co., Ltd.	
Jass Co., Ltd.	
SBS Global Network Co., Ltd.	
EMC INC.	

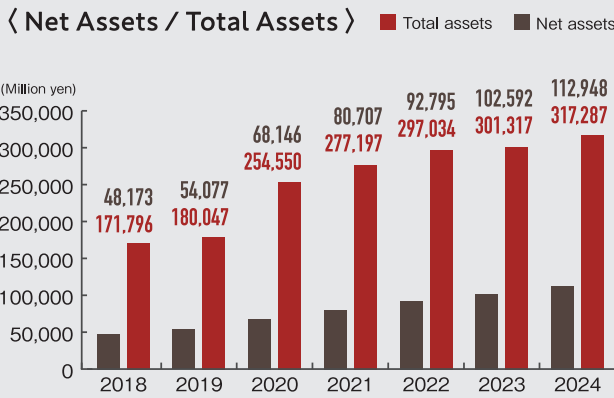
4	SBS Logicom Co., Ltd.
SBS Freight Service Co., Ltd.	SBS Logicom Kanto Co., Ltd.
Kyokushin Unyu Kaihatsu Co., Ltd.	
5	SBS Flec Co., Ltd.
SBS FlecNet Co., Ltd.	Hinomaru Kyuso Co., Ltd.

6	SBS Sokuhai Support Co., Ltd.
Ai&Ai Co., Ltd.	Shanghai Qingqiliu Plastic Processing Co., Ltd.
7	SBS Zentsu Co., Ltd.
8	SBS NSK Logistics Co., Ltd.
9	SBS Furukawa Logistics Corp.
THE YOKOHAMA DRUM MANUFACTURING CO.LTD.	
10	SBS Staff Co., Ltd.
11	SBS Finance Co., Ltd.
12	Marketing Partner, Inc.
Global Pet Nutrition Inc.	
13	SBS Asset Management Co., Ltd.
L-MAX Co., Ltd.	
14	SBS Driving School Co., Ltd.

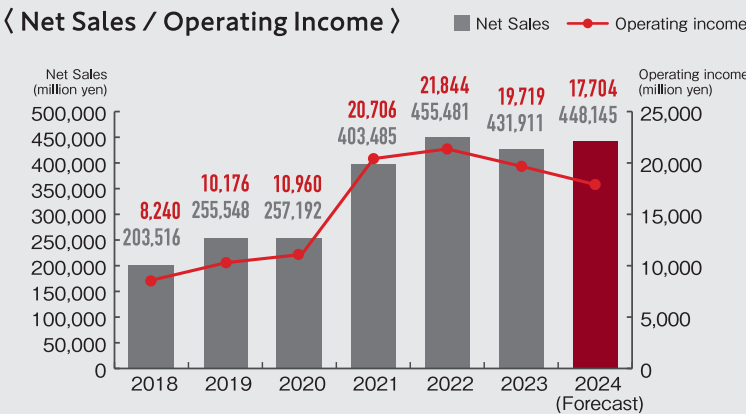
Overseas Group Companies

SBS Logistics (Singapore) Pte. Ltd. [Singapore]
SBS Logistics Holdings Hong Kong Ltd. [Hong Kong]
SBS Total Logistics Malaysia Sdn. Bhd. [Malaysia]
PT TANGGUH JAYA PRATAMA [Indonesia]
TAS Logistics Co., Ltd. [Thailand]
Atlas Logistics Pvt Ltd. [India]
SBS Europe B.V. [Netherlands]
Blackbird Logistics B.V.

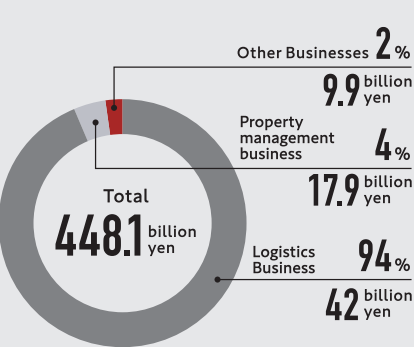
〈 Net Assets / Total Assets 〉



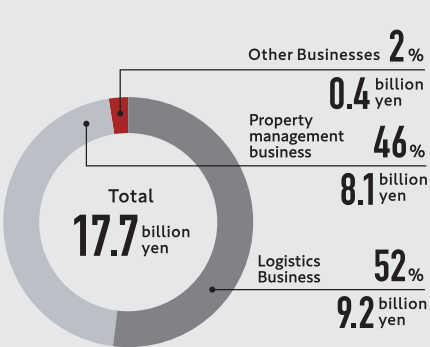
〈 Net Sales / Operating Income 〉



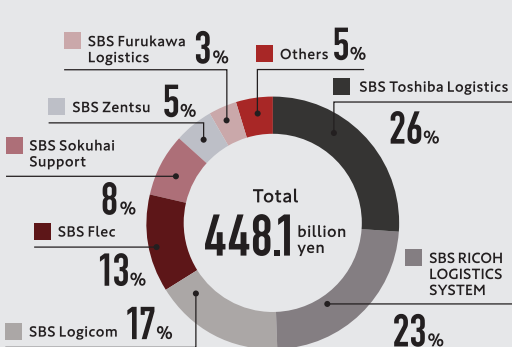
〈 Composition of Net Sales by Business 〉



〈 Composition of Operating Income by Business 〉



〈 Composition of Net Sales by Group Company 〉



※FY12/24 Results

